

THE
COMMISSION
CHAMBER'S
AUDIO VISUAL
RENOVATION

1126 E STATE RD 434, WINTER
SPRINGS, FL 32708

CITY OF
WINTER
SPRINGS

Approver

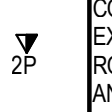
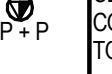
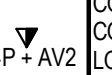

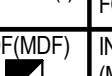

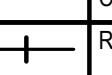
Professional Seal

No.	Description	Date

GENERAL
NOTES AND
SYMBOL
LEGENDS

Project Number	2017-090
Designed By	DAM/RS
Drawn By	RS
Checked By	MPE
Scale	As indicated
Date	7/14/2017
Project Status	90% SUBMITTAL

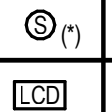

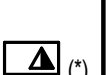


E-003

PREMISE DISTRIBUTION SYSTEM (PDS) SYMBOL LEGEND				
SYMBOL	DESCRIPTION	MOUNTING HEIGHT	MOUNTING	CABLING
	COMMUNICATIONS OUTLET WITH MINIMUM 1'c. EXTENDED ABOVE CEILING AND TURNED INTO ROOM IT SERVES. (2) COMMUNICATIONS PORTS AND (4) BLANKS. WIRED COMPLETE.	18" A.F.F. UNLESS OTHERWISE NOTED	FLUSH IN WALL	TWO (2) CAT 6 CABLES
	COMMUNICATIONS OUTLET WITH MINIMUM 1'c. EXTENDED ABOVE CEILING AND TURNED INTO ROOM IT SERVES. (2) COMMUNICATIONS PORTS AND (4) BLANKS. (2) CAT6 PLUS FLUTP TO AV-01, (1) HDMI (1) CAT6 RS 232.	18" A.F.F. UNLESS OTHERWISE NOTED	ABOVE CEILING	TWO (2) CAT 6 CABLES
	COMMUNICATIONS OUTLET WITH MINIMUM 1'c. (4) COMMUNICATIONS PORTS AND (2) BLANKS. (2) CAT6 + FLUTP TO LOCAL AV-01, (2) HDMI TO AV-01, (1) VGA TO AV-01.	18" A.F.F. UNLESS OTHERWISE NOTED	FLUSH IN WALL	TWO (4) CAT 6 CABLES
	COMMUNICATIONS OUTLET MOUNTED IN FLOOR BOX SEE GENERAL SYMBOL LEGEND. SEE SPECIFIC OUTLET SYMBOL FOR JACK AND WIRING REQUIREMENTS	FLOOR	FLUSH	
	INTERMEDIATE DISTRIBUTION FRAME (MAIN DISTRIBUTION FRAME) CABINET	---	FREESTANDING	
	PREMISES DISTRIBUTION SYSTEM CABLE IN RACEWAY OR J-HOOKS (UNLESS SPECIFICALLY OTHERWISE NOTED).	CONCEALED	CONCEALED	
	RACEWAY INTERCEPTION POINT (TYPICAL)	CONCEALED	CONCEALED	

* - DESIGNATOR INDICATES TYPE OF COMMUNICATION OUTLET.

PDS SYSTEM GENERAL NOTES

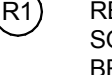
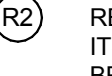
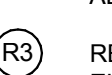
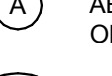
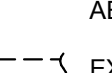


- REFER TO SPECIFICATIONS.
 - REFER TO SPECIFICATIONS FOR BASIS OF DESIGN.
 - REFER TO DETAILS.
 - ELECTRICAL CONTRACTOR TO PROVIDE AND INSTALL PULL STRINGS IN ALL EMPTY RACEWAYS/CONDUITS.
 - LOCATION OF ALL DEVICES ON PLANS ARE APPROXIMATE ONLY. VERIFY EXACT LOCATIONS, HEIGHTS, ETC. WITH OWNER AND/OR ARCHITECT PRIOR TO ROUGH-IN.
 - COORDINATE EXACT INSTALLATION REQUIREMENTS OF OUTLETS IN MILLWORK WITH ARCHITECTURAL DRAWINGS AND APPROVED MILLWORK SHOP DRAWINGS.
 - PROVIDE FIRE STOPPING ON ALL CONDUITS (AND SLEEVES) PENETRATING A RATED WALL OR FLOOR.
 - ALL [CABLES] [AND] [RACEWAYS] TO BE CONCEALED UNLESS SPECIFICALLY NOTED OTHERWISE OR APPROVED BY ENGINEER. SEE SPECIFICATIONS AND GENERAL NOTES FOR ADDITIONAL CLARIFICATIONS.
 - ALL RACEWAY TERMINATIONS SHALL HAVE BUSHINGS AND BE GROUNDED WHERE RACEWAY IS METAL.
 - PROVIDE SYSTEM COMPLETE WITH ALL DEVICES, CABLES, PATHWAYS (RACEWAYS, CONDUITS, [SLEEVES], ETC).
- **OR**
- ALL SYSTEM CABLES/WIRING MAY BE RUN IN ACCESSIBLE CEILING SPACES UTILIZING CABLE SUPPORTS AND SLEEVES FOR WALL PENETRATIONS IF CABLE/WIRING IS RATED FOR USE IN RESPECTIVE CEILING SPACE (PLENUM, ETC.) AND INSTALLED PER APPLICABLE STANDARDS/CODES. CABLE/WIRING MUST BE INSTALLED IN RACEWAY/CONDUIT WHERE INSTALLED IN NON-ACCESSIBLE SPACES.
 - MINIMUM RACEWAY/CONDUIT SIZE TO BE 1".
 - ALL COMMUNICATION WALL OUTLETS AND FLOOR OUTLETS SHALL HAVE A 1" MINIMUM CONDUIT STUBBED UP AND OUT INTO ACCESSIBLE CEILING SPACE (OF ROOM OUTLET SERVES) UNLESS SHOWN OTHERWISE ON DRAWINGS.
 - CIRCUIT ALL DEVICES TO LOCAL [TELEPHONE TERMINAL BOARD (TTB)], [SYSTEMS TERMINAL BOARD (STB)], [OR COMPUTER TERMINAL BOARD (CTB)] ALL TERMINATIONS AT [TTB][STB][CTB] SHALL BE AT DESIGNATED SECTION OF [TTB][STB][CTB]. COORDINATE WITH ALL SYSTEMS BEING TERMINATED ON [TTB][STB][CTB].
 - PROVIDE AND INSTALL CABLE/WIRING AS RECOMMENDED BY MANUFACTURER AND APPLICABLE CODES AND STANDARDS, UNLESS OTHERWISE CALLED FOR ON DRAWINGS OR IN SPECIFICATIONS. WHERE CONFLICT EXISTS, THE LARGEST SIZE CALLED FOR SHALL BE USED.
 - SIZE PATHWAYS AS RECOMMENDED BY MANUFACTURER AND APPLICABLE CODES AND STANDARDS UNLESS OTHERWISE CALLED FOR ON DRAWINGS OR IN SPECIFICATIONS. WHERE CONFLICT EXISTS, THE LARGEST SIZE CALLED FOR SHALL BE USED.
 - ALL COMMUNICATIONS WALL OUTLET BOXES SHALL BE 4-11/16" x 4-11/16" x 2-3/4" DEEP FLUSH BOXES WITH TRIM RING AS REQUIRED TO ACCOMMODATE WALL CONSTRUCTION AND OUTLET FACEPLATE.
 - SEE OUTLET DETAILS.
 - PROVIDE AND INSTALL (1) 4-PAIR CATEGORY 6 CABLE FOR EACH ACTIVE PORT IN EACH COMMUNICATION OUTLET CIRCUIT TO RESPECTIVE PATCH PANEL IN MDF/IDF AT LOCAL [TTB][STB][CTB] UNLESS NOTED OTHERWISE.
 - ALL ITEMS NOTED ON THE LEGENDS DO NOT NECESSARILY APPEAR ON PLANS.

AUDIO/VIDEO SYSTEMS SYMBOL LEGEND			
SYMBOL	DESCRIPTION	MOUNTING HEIGHT	MOUNTING
	SOUND SYSTEM SPEAKER TRANSFORMER/ CONNECTION	---	FLUSH IN CLING UNLESS OTHERWISE NOTED.
	TOUCH SCREEN LCD ROOM CONTROL PANEL	60" A.F.F. TO TOP	FLUSH IN WALL
	LCD TYPE PROJECTOR	AS SHOWN ON DRAWINGS	AS SHOWN ON DRAWINGS
	COMMUNICATIONS OUTLET MOUNTED IN FLOOR BOX WITH MINIMUM 2'c. EXTENDED ABOVE CEILING AND TURNED INTO ROOM IT SERVES, OR CABLE TRAY BELOW (LEVEL 2 ONLY). FOB SHALL BE LEGRAND #FB88 (ON GRADE OR FIRE RATED AIR) (*) = DENOTES OUTLET TYPE	FLOOR	FLUSH
	AUDIO/VISUAL EQUIPMENT CABINET	---	FREE STANDING

AUDIO/VIDEO SYSTEM GENERAL NOTES

- REFER TO SPECIFICATIONS.
- REFER TO SPECIFICATIONS FOR BASIS OF DESIGN.
- REFER TO DETAILS.
- REFER TO SYSTEM BLOCK DIAGRAM.
- ELECTRICAL CONTRACTOR TO PROVIDE PULL STRINGS IN ALL EMPTY RACEWAYS.
- LOCATION OF ALL DEVICES ON PLANS ARE APPROXIMATE ONLY. VERIFY EXACT LOCATIONS, HEIGHTS, ETC. WITH OWNER AND/OR ARCHITECT PRIOR TO ROUGH-IN.
- PROVIDE CABLE TO ALL OUTLETS UNLESS SPECIFICALLY NOTED OTHERWISE.
- ALL CABLES/RACEWAYS TO BE CONCEALED UNLESS SPECIFICALLY NOTED OTHERWISE OR APPROVED BY ENGINEER. SEE SPECIFICATIONS AND GENERAL NOTES FOR ADDITIONAL CLARIFICATIONS.
- ALL SYSTEM CABLES SHALL BE CAT6A AND SHALL BE INSTALLED IN RACEWAYS.
- PROVIDE FIRESTOPPING ON ALL CONDUITS AND SLEEVES PENETRATING A RATED WALL OR FLOOR.
- COORDINATE EXACT INSTALLATION REQUIREMENTS OF OUTLETS IN MILLWORK WITH ARCHITECTURAL DRAWINGS AND APPROVED MILLWORK SHOP DRAWINGS.
- ALL RACEWAY TERMINATIONS SHALL HAVE BUSHINGS AND BE GROUNDED WHERE RACEWAY IS METAL.
- COORDINATE WITH FIRE ALARM CONTRACTOR PRIOR TO BID.
- ALL ITEMS NOTED ON THE LEGENDS DO NOT NECESSARILY APPEAR ON PLANS.
- CAT 6+ FLUTP CABLE TO AV CABINET.
- ROUTE ALL COAX TO DESIGNATED SECTION OF TTB AND PROVIDE DISTRIBUTION AMP AND EQUIPMENT.
- PROVIDE ALL REQUIRED ACCESSORIES FOR FOB REQUIRED TO INSTALL ALL NOTED POWER, DATA, AND AV OUTLETS AND CABLING

DEMOLITION LEGEND

-  R1 REMOVE ALL ELECTRICAL ASSOCIATED WITH THIS ITEM, COMPLETE BACK TO ITS SOURCE. SOURCE IS CONSIDERED TO BE FIRST UPSTREAM DEVICE OR CIRCUIT BREAKER THAT FEEDS THIS AFFECTED CIRCUIT. SEE GENERAL NOTES AND SPECIFICATIONS FOR ADDITIONAL REQUIREMENTS.
-  R2 REMOVE ALL ELECTRICAL IN AREA OF REMODEL/RENOVATION COMPLETE BACK TO ITS SOURCE. SOURCE IS CONSIDERED TO BE FIRST UPSTREAM DEVICE OR CIRCUIT BREAKER OUTSIDE OF AREA OF REMODEL THAT FEEDS CIRCUITS/DEVICES WITHIN AREA OF REMODEL/RENOVATION. SEE GENERAL NOTES AND SPECIFICATIONS FOR ADDITIONAL REQUIREMENTS.
-  R3 REMOVE THE DEVICE ONLY. REFER TO RENOVATION PLAN FOR ADDITIONAL ELECTRICAL.
-  A ABANDON COMPLETE. PULL OUT CONDUCTORS. REMOVE ALL VISIBLE SECTIONS OF RACEWAY.
-  R/A REMOVE COMPLETE AS NOTED ABOVE EXCEPT THAT PORTIONS OF CONDUIT CONCEALED UNDERGROUND OR IN CONCRETE MAY BE ABANDONED, AS NOTED ABOVE.
-  --- EXISTING WALLS TO BE REMOVED COMPLETE.
-  ——— EXISTING WALLS TO REMAIN.

THE COMMISSION CHAMBER'S AUDIO VISUAL RENOVATION

1126 E STATE RD 434, WINTER SPRINGS, FL 32708

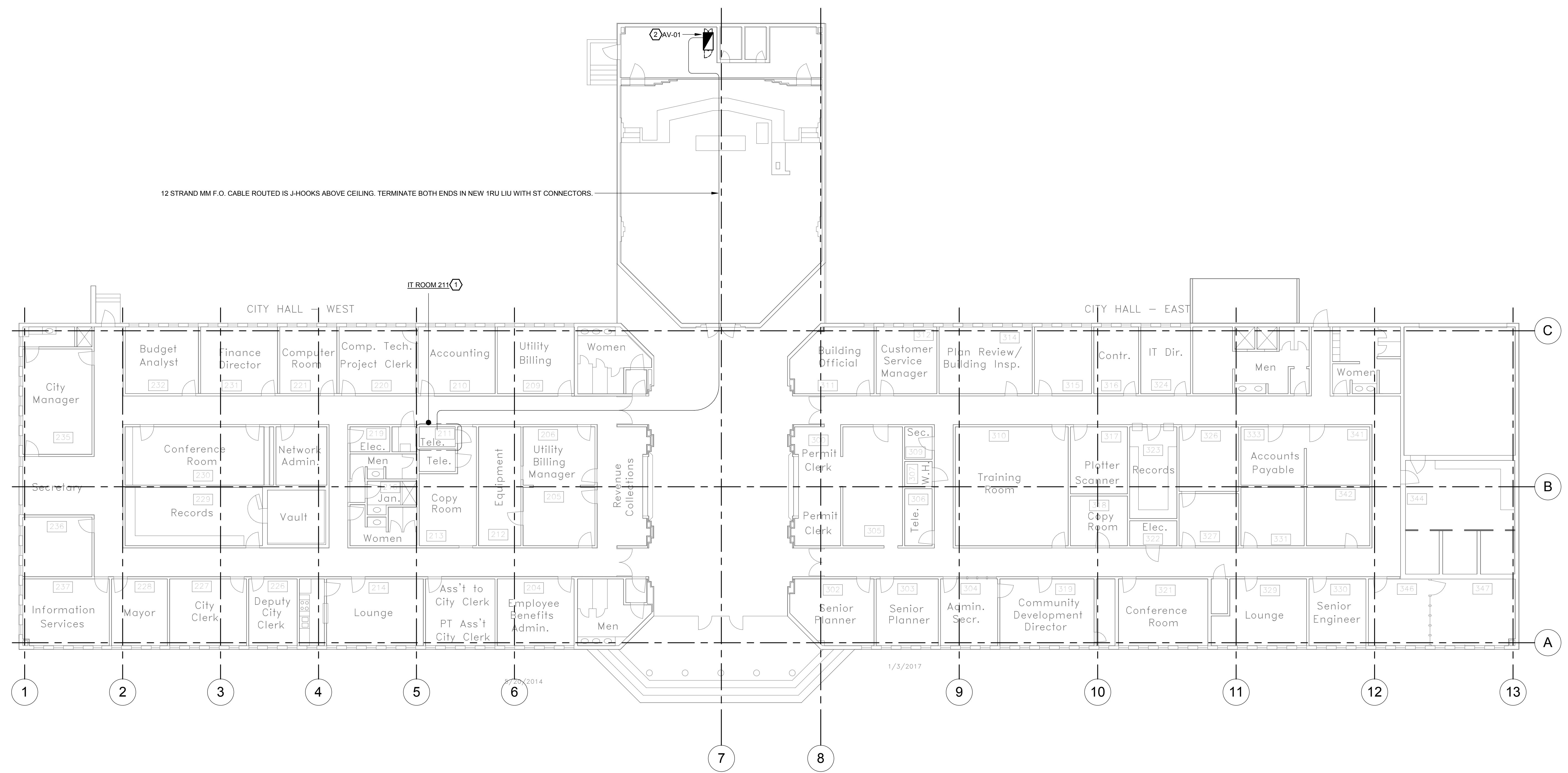
CITY OF WINTER SPRINGS
 Approver

Professional Seal

No.	Description	Date

TECHNOLOGY OVERALL PLAN

Project Number	2017-090
Designed By	DAM/RS
Drawn By	RS
Checked By	MPE
Scale	3/32" = 1'-0"
Date	7/14/2017
Project Status	90% SUBMITTAL



1 TECHNOLOGY OVERALL PLAN
 3/32" = 1'-0"

GENERAL NOTES:
 1. REFER TO GENERAL NOTES AND LEGENDS
 2. REFER TO DETAIL, RISER DIAGRAMS, AND SPECIFICATIONS

HEX NOTES:
 1. PROVIDE MM SFP MODULE AND INSTALL IN EXISTING CITY LAN SWITCH TO CONNECT AV-01 CABINET LAN SWITCH TO EXISTING NETWORK.
 2. PROVIDE NEW 24P POE + CISCO 3650 WITH MM F.O. SFP MODULE FOR CONNECTION TO NEW F.O. CABLE AND EXISTING CITY LAN.

THE COMMISSION CHAMBER'S AUDIO VISUAL RENOVATION

1126 E STATE RD 434, WINTER SPRINGS, FL 32708

CITY OF WINTER SPRINGS

Approver

Professional Seal

No.	Description	Date

RENO TECHNOLOGY FLOOR/CEILING PLAN - CITY HALL CHAMBERS

Project Number	2017-090
Designed By	DAM/RS
Drawn By	RS
Checked By	MPE
Scale	1/4" = 1'-0"
Date	7/14/2017
Project Status	90% SUBMITTAL

8/29/2017 11:26:17 AM

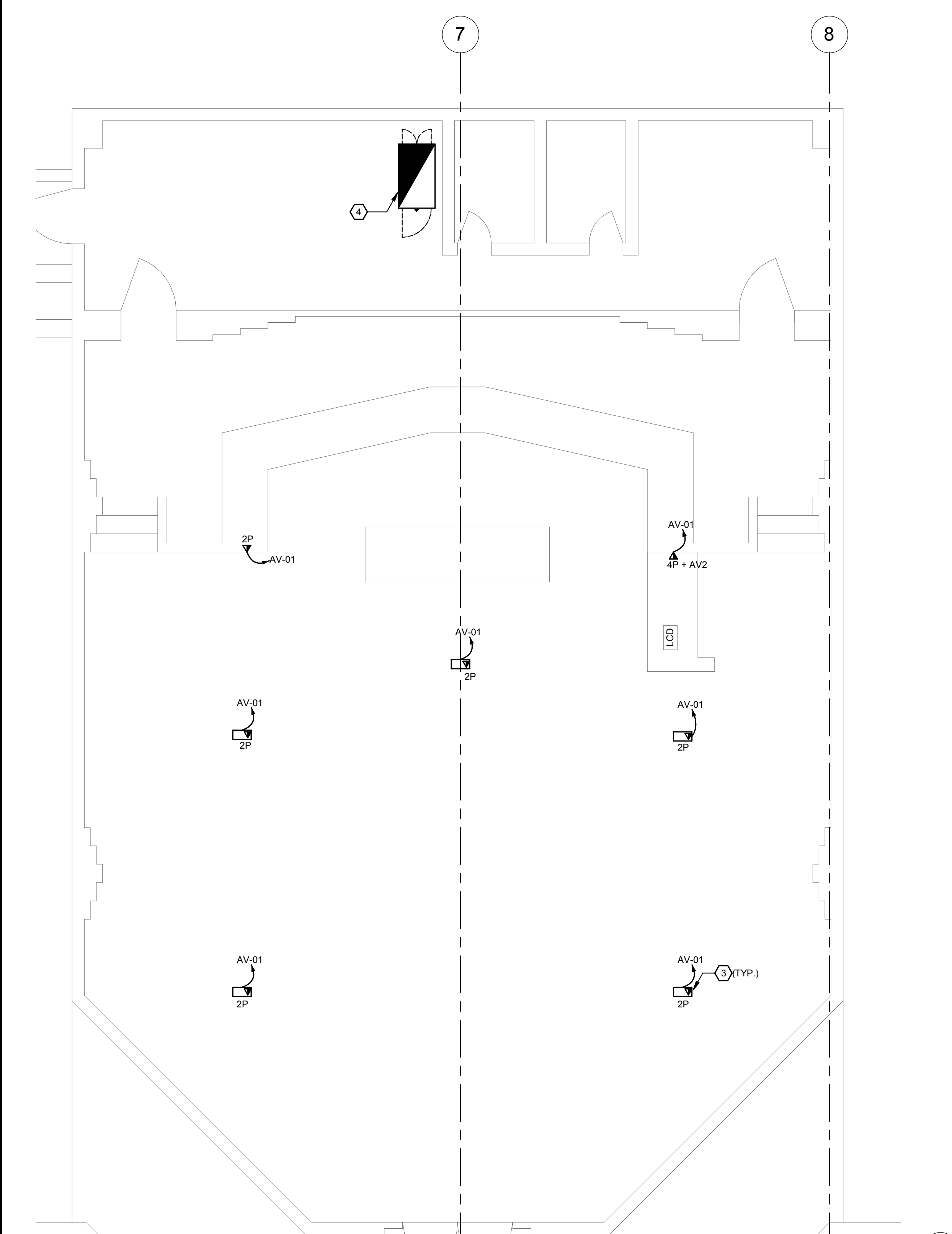
GEN NOTES:
1. REFER TO GENERAL NOTES AND LEGENDS
2. REFER TO DETAIL, RISER DIAGRAMS, AND SPECIFICATIONS
3. EXISTING SPEAKER CIRCUITING IS UNKNOWN AND SHALL REMAIN ALL SPEAKERS ARE FED FROM AMPS IN AV-01.

HEX NOTES: ◻ BASE BID

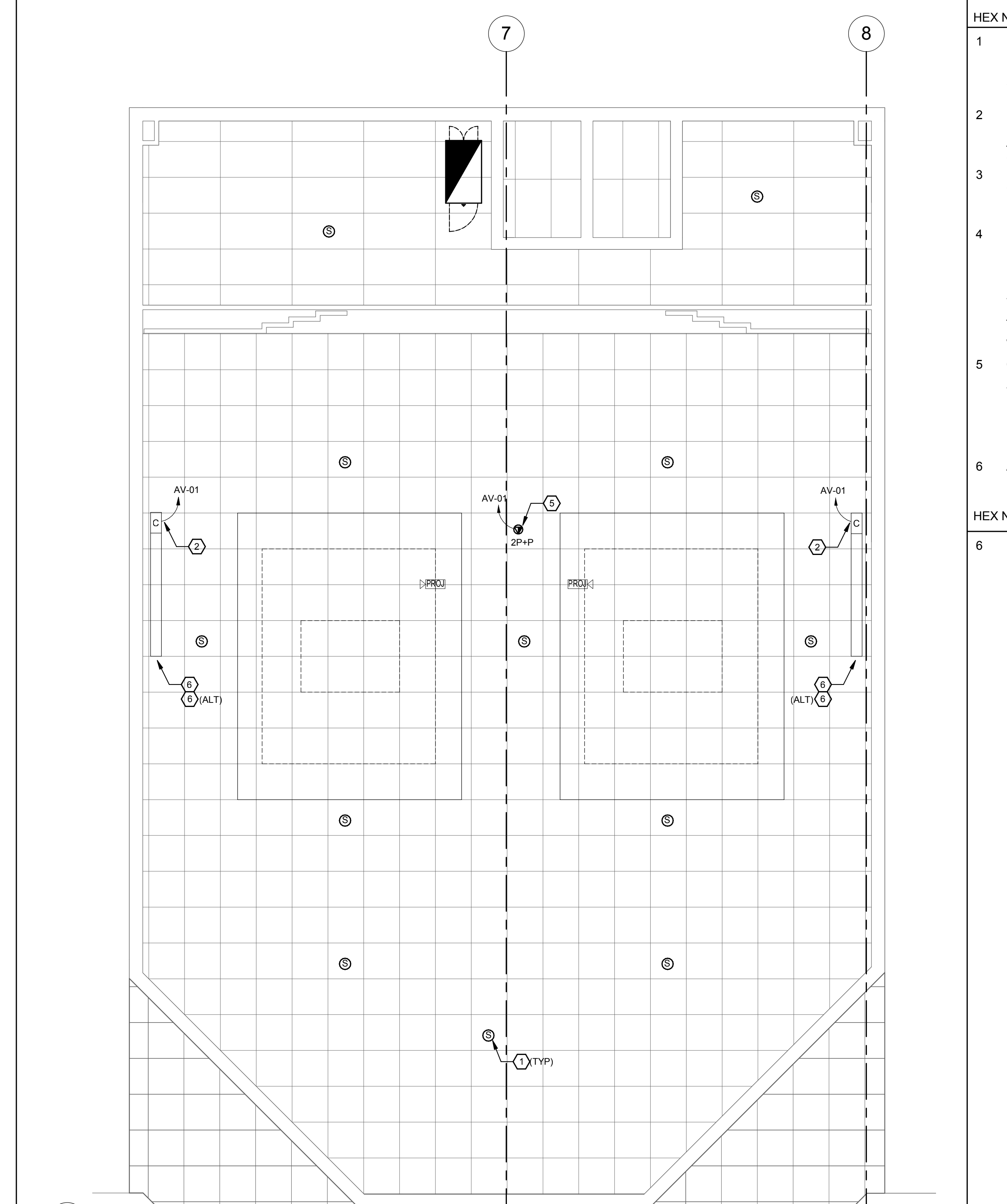
- INSTALL NEW ATLAS SOUND SPEAKERS MODEL # FAP63T-W IN EXISTING CEILING TILE. PROVIDE NEW 18/2 SPEAKER CABLE MATCHING EXISTING CIRCUITING.
- PROVIDE CABLE FROM SCREEN CONTROLLER TO AV CONTROLLER IN AV-01 FOR REMOTE RAISE/LOWER OF SCREEN.
- FOB PROVIDED AND INSTALLED BY OTHERS. INSTALL DATA OUTLET AND CABLE AS ROUTED ON FLOOR PLANS. ROUTE CONDUIT AND CABLE TO AV-01.
- REWORK CABINET AS REQUIRED. INSTALL NEW DATA AND AV EQUIPMENT. REFER TO ELEVATION AND DETAILS. CABINET TO BE RELOCATED BY CONTRACTOR. ROUTE NEW CABLE TO THIS LOCATION AND RECONNECT ALL EXISTING AUDIO CABLE REMAINING. COORDINATE WITH OWNER PRIOR TO WORK.
- OUTLET MOUNTED IN CEILING BOX FSR# CB-22 W/ MOUNTING KIT FOR THREADED ROD AND 2 GANG BOX INSTALLATION KIT. PROVIDE CABLE PER DETAIL TO BOTH LOCAL PROJECTORS. CONNECT RECEPTACLES TO LOCAL PROJECTOR CIRCUIT.
- ADJUST SCREEN VERTICAL POSITION FOR 16:9 PROJECTOR IMAGE. TOP OF IMAGE SHALL BE 6" FROM CEILING.

HEX NOTES: ◻ ALTERNATE #1

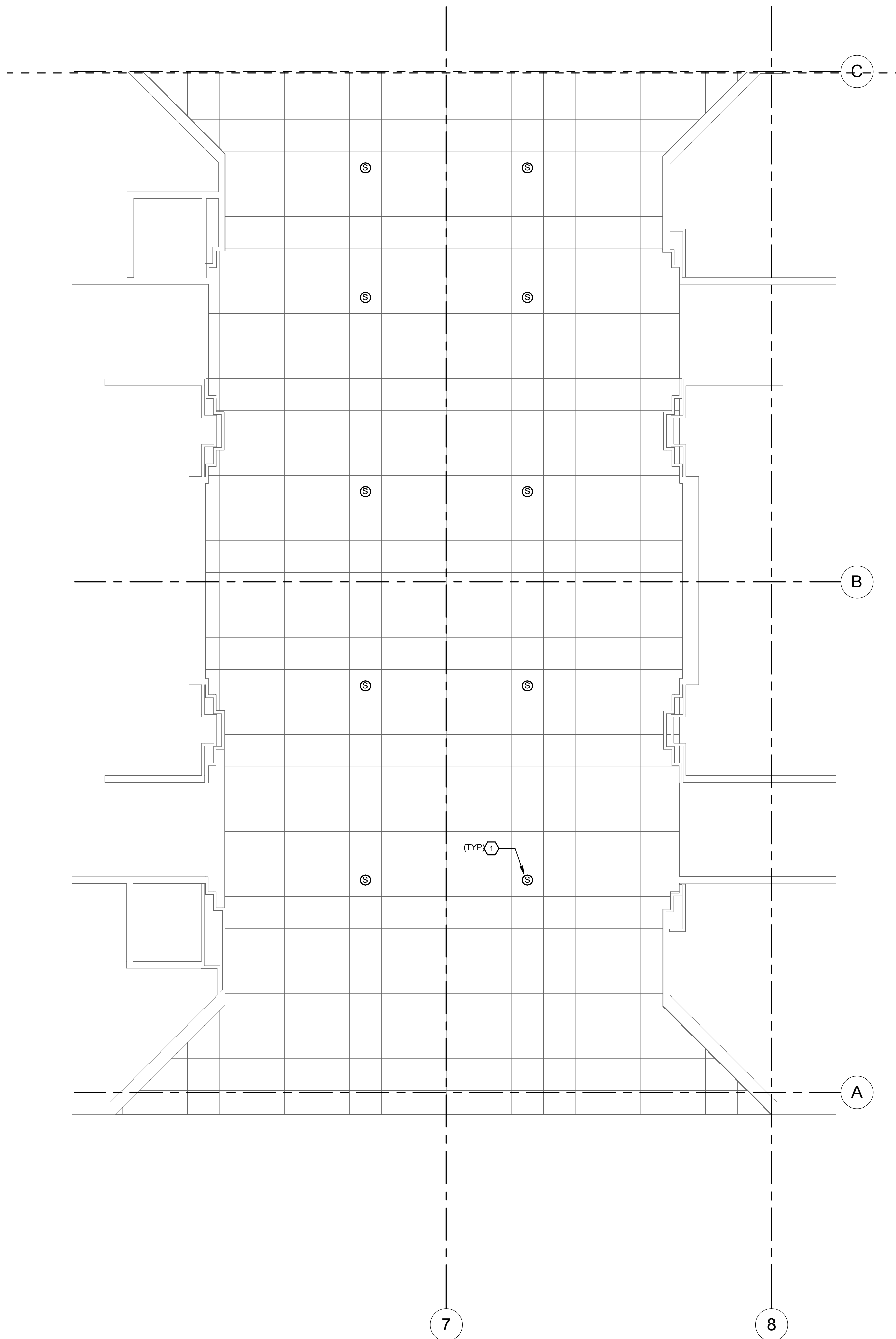
- PROVIDE AND INSTALL NEW MOTORIZED PROJECTOR SCREEN. BASIS OF DESIGN SHALL BE DA-LITE ADVANTAGE HIGH CONTRAST MATTE WHITE HDTV 133" DIAGONAL WITH INTERNAL SCREEN CONTROLLER.



1 RENO TECHNOLOGY FLOOR PLAN - CITY HALL CHAMBERS
1/4" = 1'-0"



2 RENO TECHNOLOGY RCP PLAN - CITY HALL CHAMBERS
1/4" = 1'-0"



2 RENO TECHNOLOGY RCP PLAN - CITY HALL LOBBY
1/4" = 1'-0"

GEN NOTES:

1. REFER TO GENERAL NOTES AND LEGENDS
2. REFER TO DETAIL, RISER DIAGRAMS, AND SPECIFICATIONS
3. EXISTING SPEAKER CIRCUITING IS UNKNOWN AND SHALL REMAIN ALL SPEAKERS ARE FED FROM AMPS IN AV-01.

HEX NOTES: ○ BASE BID

1. INSTALL NEW ATLAS SOUND SPEAKERS MODEL # FAP63T-W IN EXISTING CEILING TILE. PROVIDE NEW 18/2 SPEAKER CABLE MATCHING EXISTING CIRCUITING.

MATERN

Mechanical • Electrical • Plumbing • Fire Protection
Technology • Commissioning • Energy Engineers

130 Candace Drive
Maitland, FL 32751

ENG. BUS. No. EB-005096 PHONE (407) 740-5020
CERT. OF AUTH. No. 5096 FAX (407) 740-0365

MPE JOB #: 2017-090

**THE
COMMISSION
CHAMBER'S
AUDIO VISUAL
RENOVATION**

1126 E STATE RD 434, WINTER
SPRINGS, FL 32708

**CITY OF
WINTER
SPRINGS**

Approver

Professional Seal

No.	Description	Date

**RENO
TECHNOLOGY
CEILING PLAN -
CITY HALL
LOBBY**

Project Number	2017-090
Designed By	DAM/RS
Drawn By	RS
Checked By	MPE
Scale	1/4" = 1'-0"
Date	7/14/2017
Project Status	90% SUBMITTAL

E-302

THE COMMISSION CHAMBER'S AUDIO VISUAL RENOVATION

1126 E STATE RD 434, WINTER SPRINGS, FL 32708

CITY OF WINTER SPRINGS

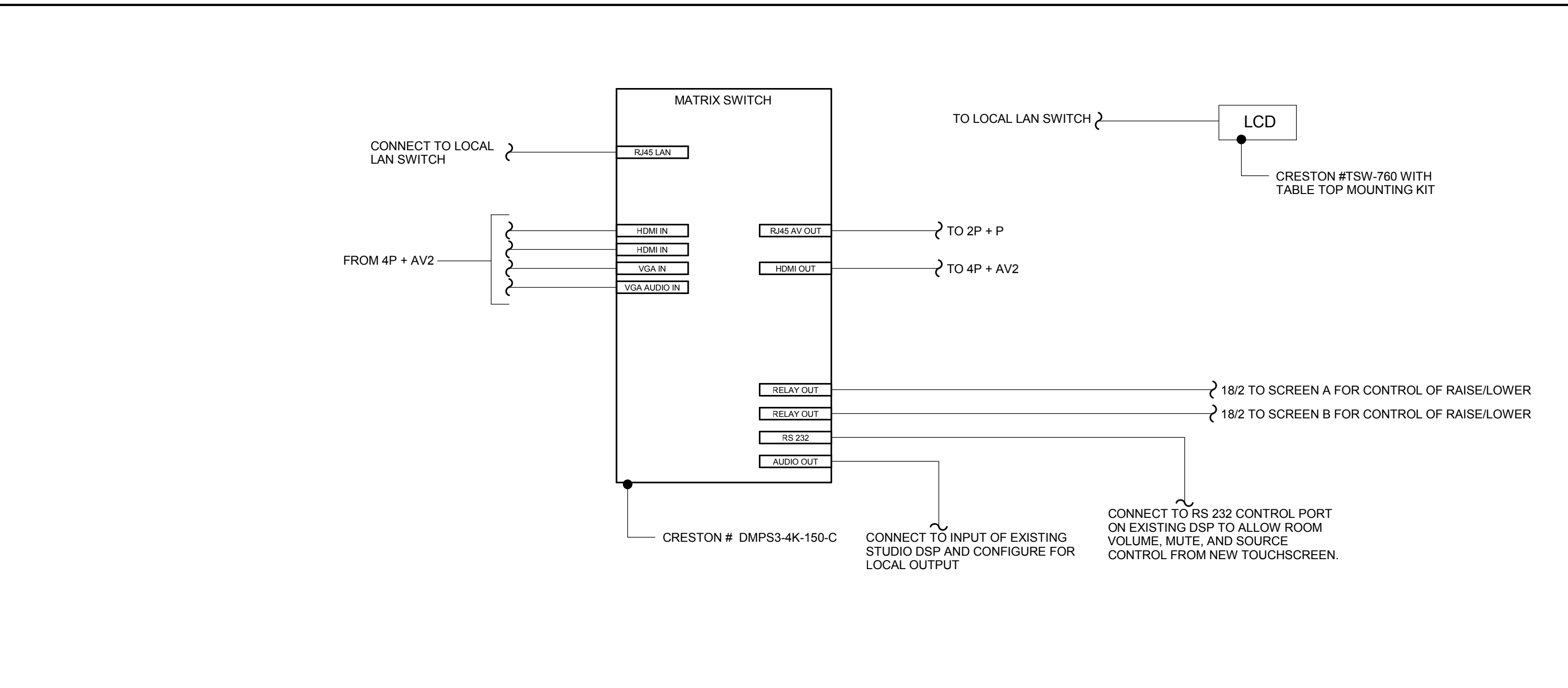
Approver

Professional Seal

No.	Description	Date

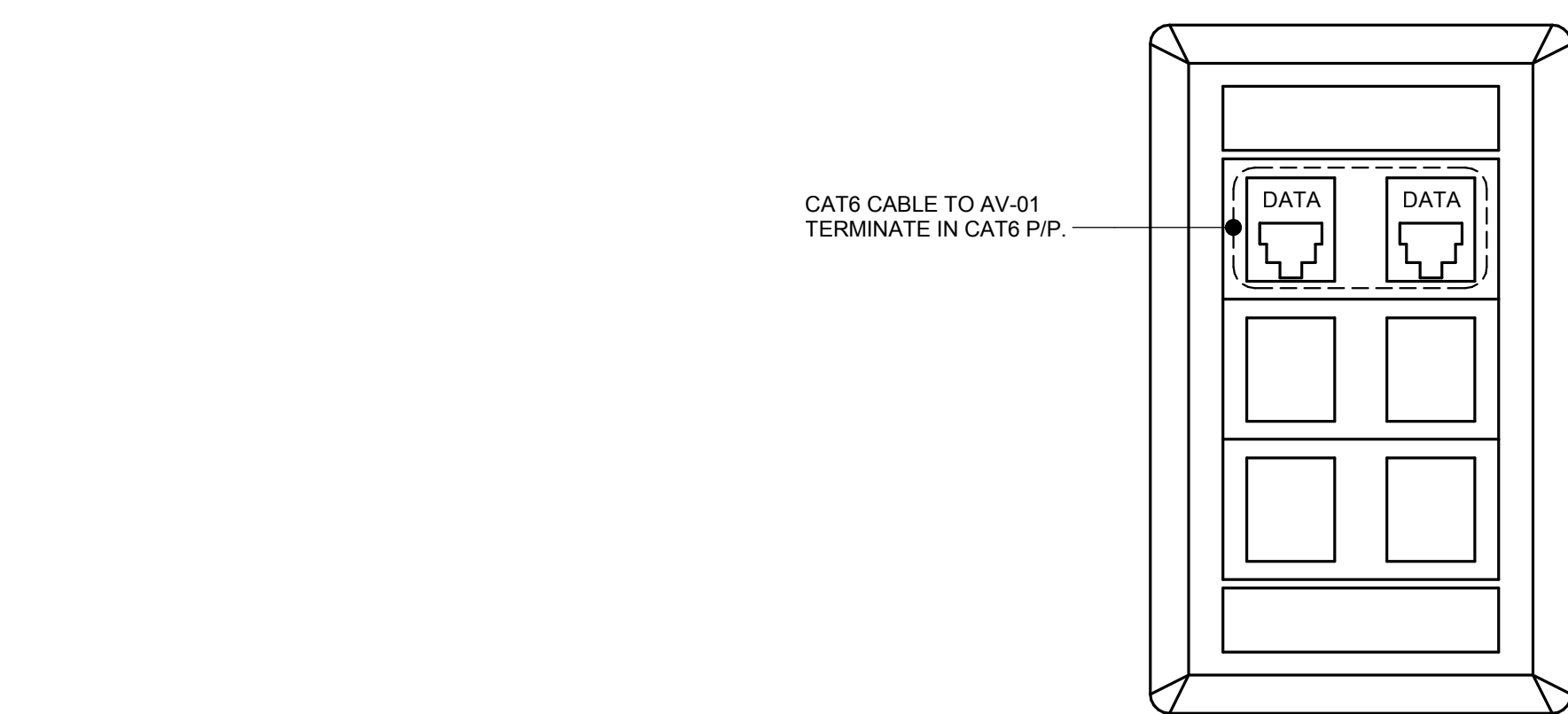
TECHNOLOGY BLOCK DIAGRAM

Project Number	2017-090
Designed By	DAM/RS
Drawn By	RS
Checked By	MPE
Scale	1/8" = 1'-0"
Date	7/14/2017
Project Status	90% SUBMITTAL



VIDEO SYSTEM BLOCK DIAGRAM

1



TYPICAL OUTLET BLOCK DIAGRAM - 2P

- NOTES:
- REFER TO SPECIFICATIONS FOR MANUFACTURE, MODEL NUMBER, COLOR, ETC.
 - CONTRACTOR TO PROVIDE CABLING COMPLETE FOR EACH JACK SHOWN.
 - TERMINATE ALL CABLING AT DESIGNATE AREA OF TTB OR RACK/CABINET.
 - FLACE PLATE - STANDARD 1 GANG
DATA PLATE - HUBBLE ISF60W
DATA JACK - HUBBLE HXJ6B

2

THE
 COMMISSION
 CHAMBER'S
 AUDIO VISUAL
 RENOVATION

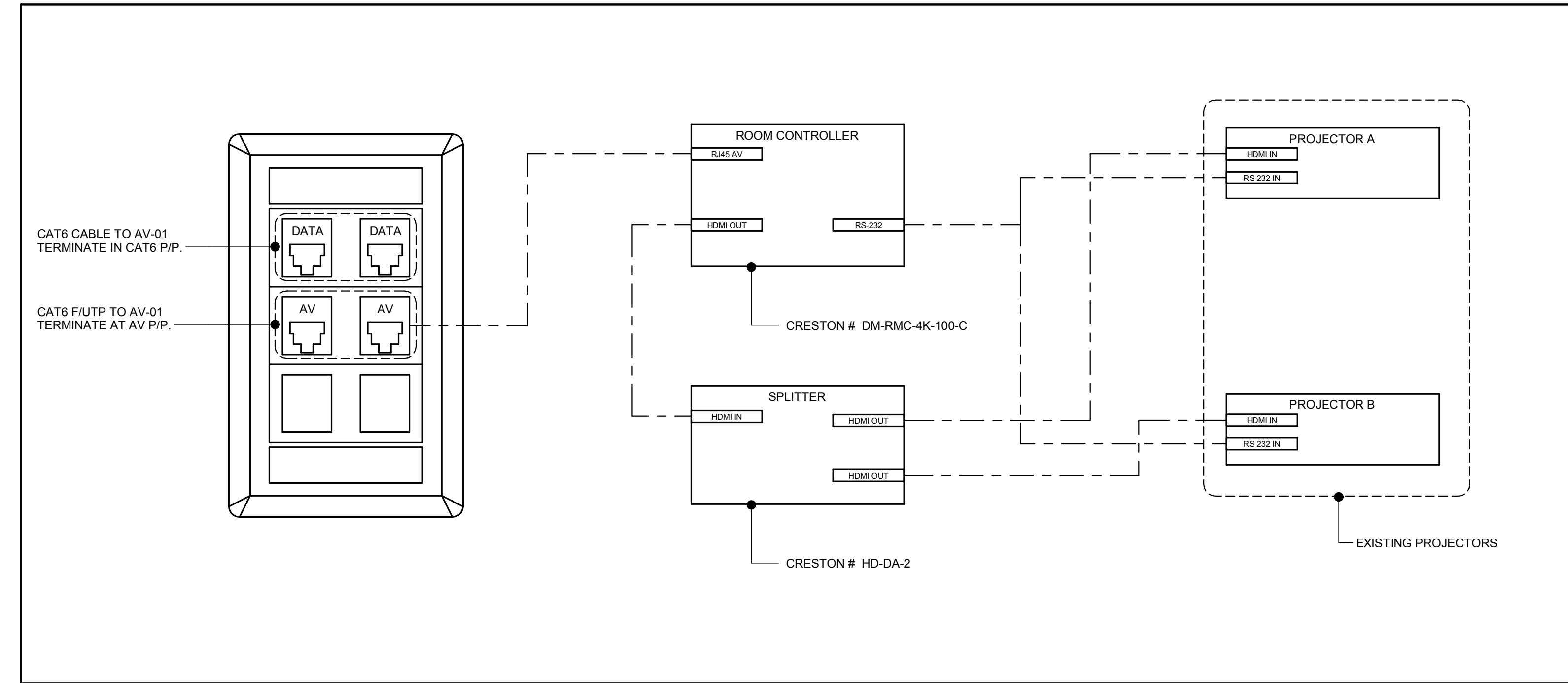
1126 E STATE RD 434, WINTER
 SPRINGS, FL 32708

CITY OF
 WINTER
 SPRINGS

Approver

Professional Seal

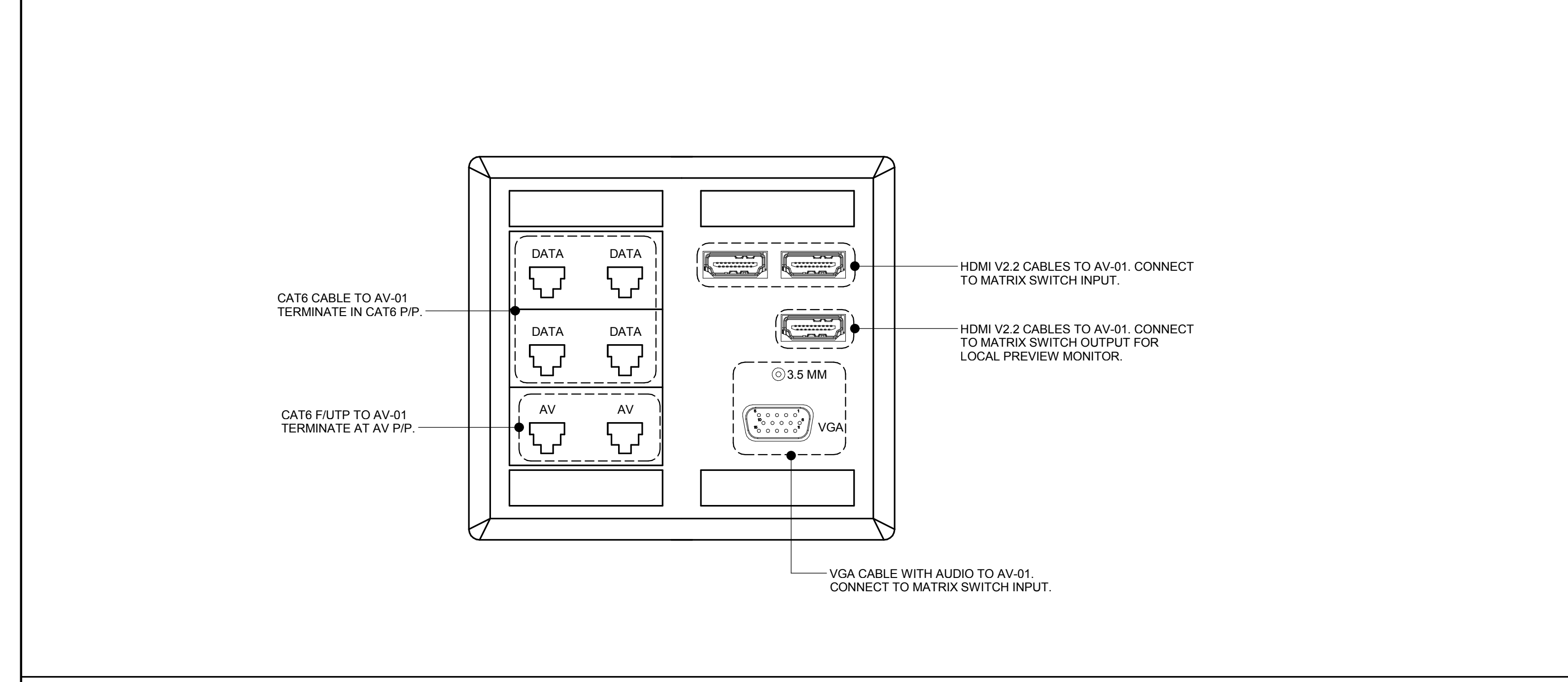
No.	Description	Date



TYPICAL OUTLET BLOCK DIAGRAM - 2P + P

- NOTES:
1. REFER TO SPECIFICATIONS FOR MANUFACTURE, MODEL NUMBER, COLOR, ETC.
 2. CONTRACTOR TO PROVIDE CABLING COMPLETE FOR EACH JACK SHOWN.
 3. TERMINATE ALL CABLING AT DESIGNATE AREA OF TT/B OR RACK/CABINET.
 4. FACE PLATE - HUBBLE # IFP160W
 DATA JACK - HUBBLE # HXJ6B (BLUE)
 AV JACK - HUBBLE #SJ6 (SHIELDED).
 5. ALL DEVICES SHOWN, UNLESS NOTED OTHERWISE ARE TO BE INSTALLED IN CEILING BOX.
 6. CONNECT ALL POWER SUPPLIES TO RECEPTICLE IN CEILING BOX.

3



TYPICAL OUTLET BLOCK DIAGRAM - 4P + AV2

- NOTES:
1. REFER TO SPECIFICATIONS FOR MANUFACTURE, MODEL NUMBER, COLOR, ETC.
 2. CONTRACTOR TO PROVIDE CABLING COMPLETE FOR EACH JACK SHOWN.
 3. TERMINATE ALL CABLING AT DESIGNATE AREA OF TT/B OR RACK/CABINET.
 4. FLACE PLATE - PANEL CRAFTERS CUSTOM PLATE WITH JACKS AS NOTED
 DATA PLATE - HUBBLE ISF60W
 DATA JACK - HUBBLE HXJ6B
 VGA - PASS THRU
 HDMI - PASS THRU
 3.5 MM - FEMALE RECEPTICLE WITH CABLE

4

TECHNOLOGY
 BLOCK
 DIAGRAM

Project Number	2017-090
Designed By	DAM/RS
Drawn By	RS
Checked By	MPE
Scale	1/8" = 1'-0"
Date	7/14/2017
Project Status	90% SUBMITTAL

E-802

THE COMMISSION CHAMBER'S AUDIO VISUAL RENOVATION

1126 E STATE RD 434, WINTER SPRINGS, FL 32708

CITY OF WINTER SPRINGS

Approver

Professional Seal

No.	Description	Date

DEMO TECHNOLOGY FLOOR/CEILING PLAN - CITY HALL CHAMBERS

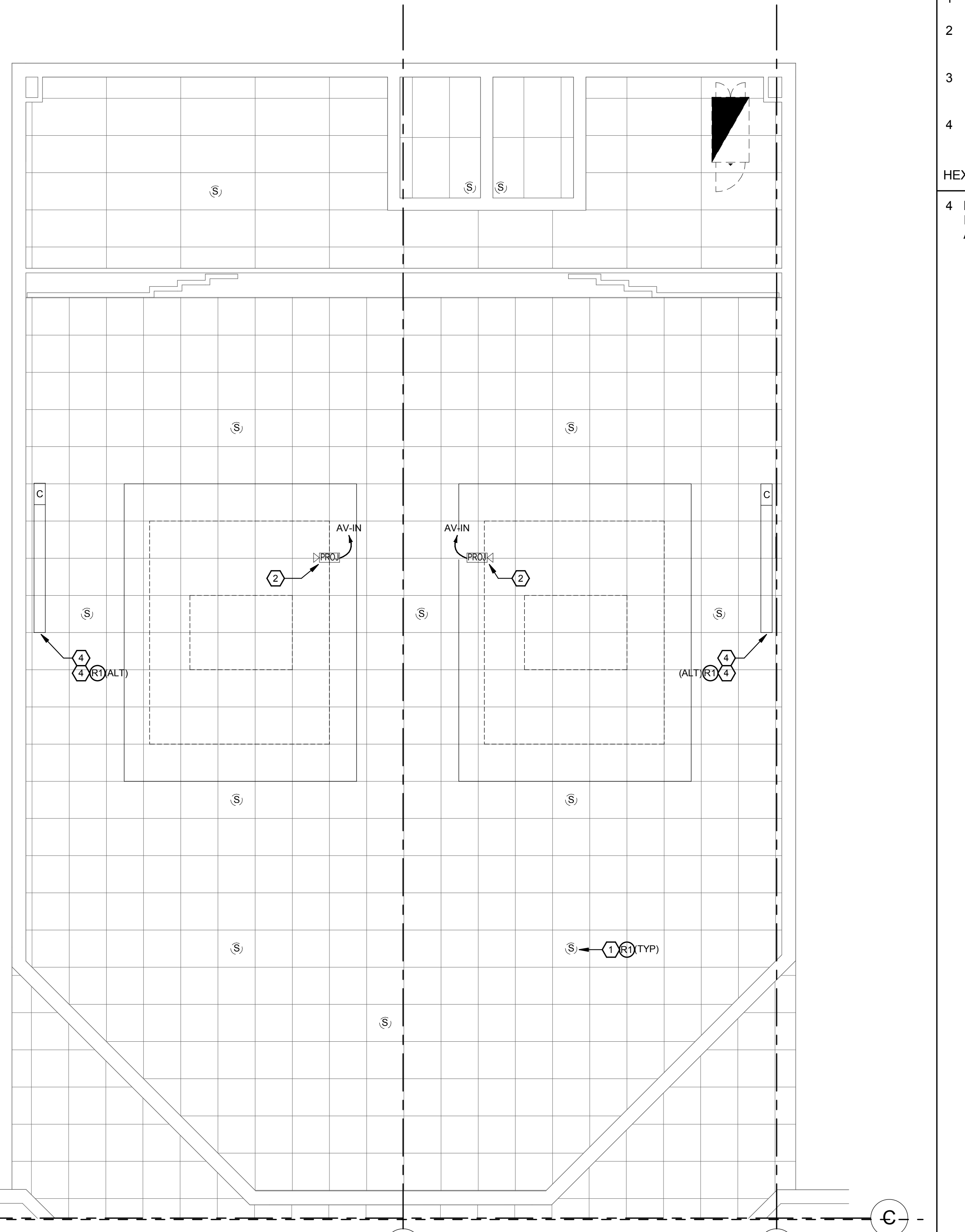
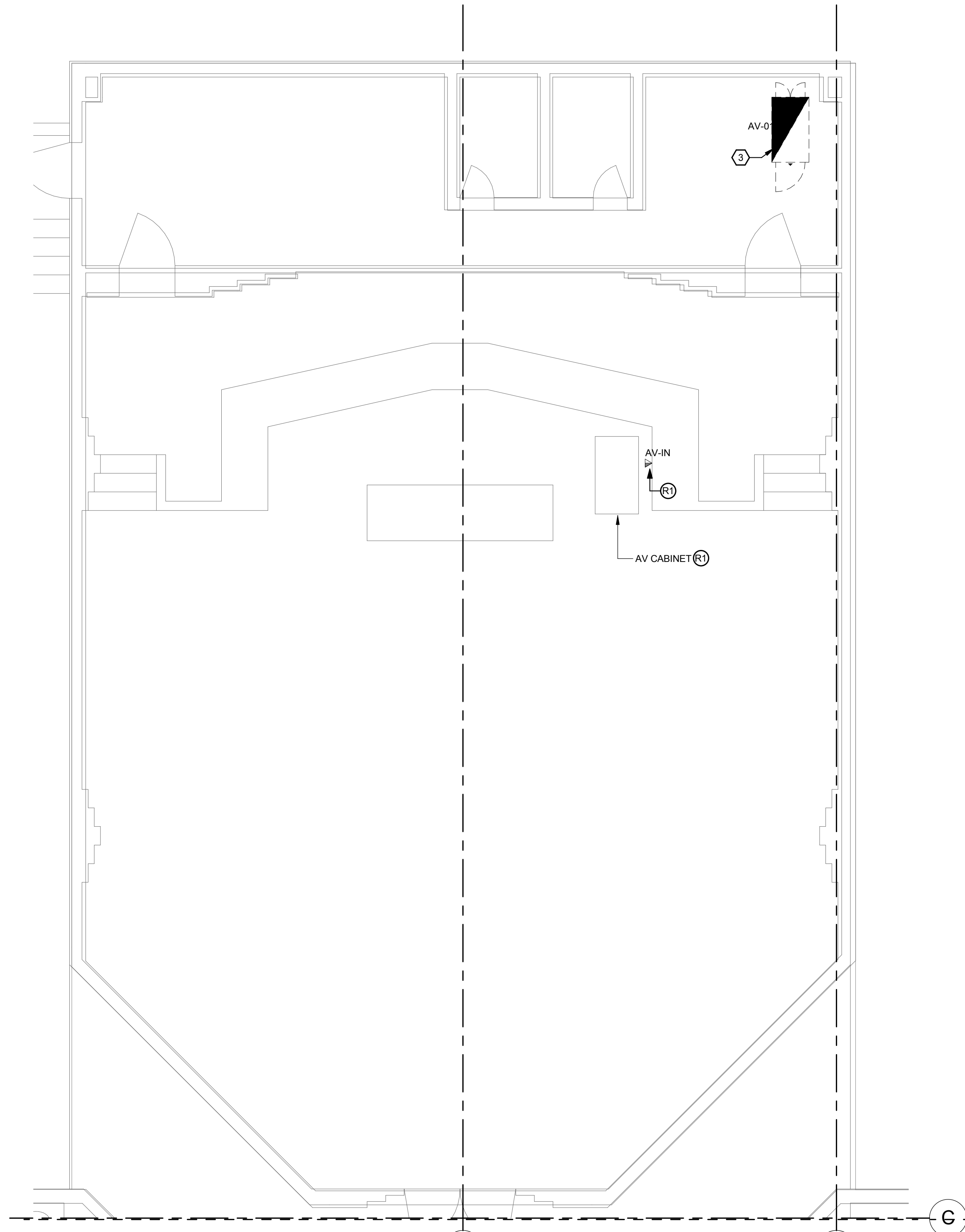
Project Number	2017-090
Designed By	DAM/RS
Drawn By	RS
Checked By	MPE
Scale	1/4" = 1'-0"
Date	7/14/2017
Project Status	90% SUBMITTAL

ED-301

GEN NOTES:
 1. REFER TO GENERAL NOTES AND LEGENDS
 2. REFER TO DETAIL, RISER DIAGRAMS, AND SPECIFICATIONS
 3. EXISTING SPEAKER CIRCUITING IS UNKNOWN AND SHALL REMAIN ALL SPEAKERS ARE FED FROM AMPS IN AV-01.

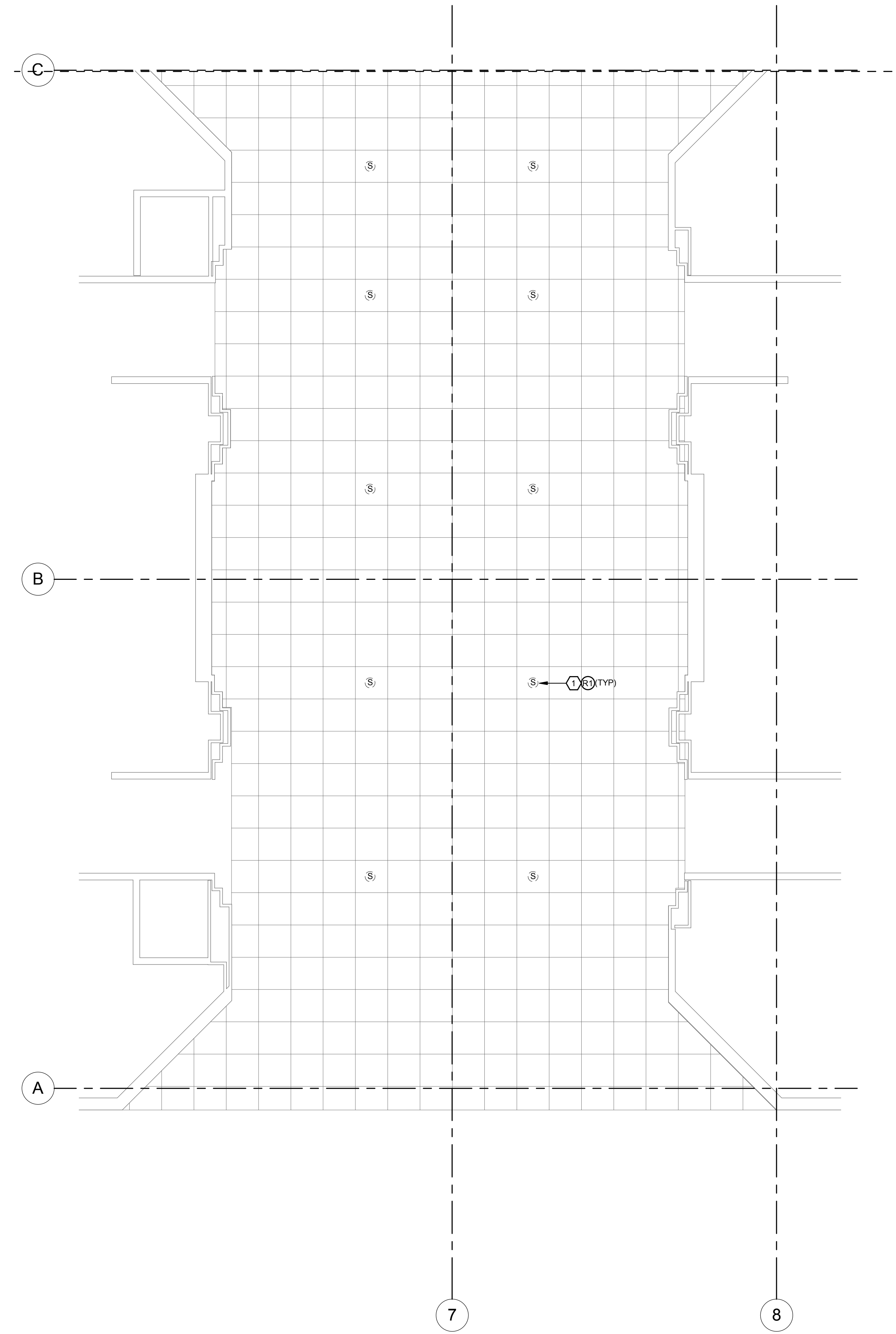
HEX NOTES: ○ BASE BID
 1 REMOVE CEILING SPEAKER AND CABLE COMPLETE.
 2 PROJECTOR TO REMAIN AND BE REUSED. REMOVE EXISTING CABLE TO LOCAL AV-IN WALL PLATE COMPLETE.
 3 AV CABINET TO BE RELOCATED, REWORKED / EXTEND EXISTING AUDIO CABLE TO NEW LOCATION.
 4 MOTORIZED PROJECTOR SCREEN TO REMAIN.

 HEX NOTES: ○ ALTERNATE #1
 4 REMOVE EXISTING MOTORIZED SCREEN. EXISTING POWER CIRCUIT TO REMAIN AND BE REUSED FOR NEW SCREEN.



1 DEMO TECHNOLOGY FLOOR PLAN - CITY HALL CHAMBERS
 1/4" = 1'-0"

2 DEMO TECHNOLOGY RCP PLAN - CITY HALL CHAMBERS
 1/4" = 1'-0"



② DEMO TECHNOLOGY RCP PLAN - CITY HALL LOBBY
1/4" = 1'-0"

GEN NOTES:

- 1. REFER TO GENERAL NOTES AND LEGENDS
- 2. REFER TO DETAIL, RISER DIAGRAMS, AND SPECIFICATIONS
- 3. EXISTING SPEAKER CIRCUITING IS UNKNOWN AND SHALL REMAIN ALL SPEAKERS ARE FED FROM AMPS IN AV-01.

HEX NOTES: ○ BASE BID

- 1 REMOVE CEILING SPEAKER AND CABLE COMPLETE.



Mechanical • Electrical • Plumbing • Fire Protection
Technology • Commissioning • Energy Engineers

130 Candace Drive
Maitland, FL 32751
ENG. BUS. No. EB-005096 PHONE (407) 740-5020
CERT. OF AUTH. No. 5096 FAX (407) 740-0365
MPE JOB #: 2017-090

THE
COMMISSION
CHAMBER'S
AUDIO VISUAL
RENOVATION

1126 E STATE RD 434, WINTER
SPRINGS, FL 32708

CITY OF
WINTER
SPRINGS

Approver

Professional Seal

No.	Description	Date

DEMO
TECHNOLOGY
CEILING PLAN -
CITY HALL
LOBBY

Project Number	2017-090
Designed By	DAM/RS
Drawn By	RS
Checked By	MPE
Scale	1/4" = 1'-0"
Date	7/14/2017
Project Status	90% SUBMITTAL

ED-302